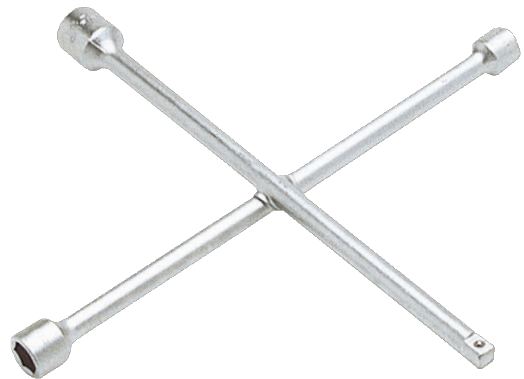


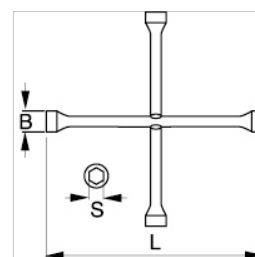


**BWXW3**  
**Llaves en cruz**



**DETALLES DEL PRODUCTO**






- Llaves en cruz de cuatro posiciones para trabajos pesados
- Diferentes modelos con distintas dimensiones para diferentes aplicaciones
- Aleación de acero de alto rendimiento
- Dureza: 43-48 HRC
- Acabado cromado
- De conformidad con las normas
- ISO 6788
- DIN 3119
- UNE 16518



**Follow the Fish!**



## ATRIBUTOS DE PRODUCTO

Producto	<b>S</b>	<b>B</b>	<b>L</b>					
<b>BWXW3</b>	17, 19, 21, 22 mm	25, 27, 29, 31 mm	378 mm		378 mm	30 mm	378 mm	1.27 kg

